

Unleash Your Creativity: A Comprehensive Guide to Crocheting Top-Down Beanies

Welcome to the captivating world of crochet, where you'll embark on a journey to master the art of creating stunning top-down beanies.



Learn to Crochet Top-Down Beanies by Rohn Strong

★★★★☆ 4.5 out of 5

Language	: English
File size	: 12180 KB
Text-to-Speech	: Enabled
Screen Reader	: Supported
Enhanced typesetting	: Enabled
Print length	: 26 pages
Lending	: Enabled



This comprehensive guide is your ultimate resource, empowering you to unlock the secrets of crochet and transform yarn into cozy and stylish beanies that fit perfectly.

Essential Techniques

Yarn Selection

Choose a soft and durable yarn that suits your needs. Consider the weight and texture to create the desired look and feel.

Hook Size

Select a hook size that complements your yarn choice. A smaller hook creates denser stitches, while a larger hook results in looser stitches.

Basic Stitches

- **Chain stitch (ch):** Creates the foundation and increases the width of the fabric.
- **Single crochet (sc):** Forms the rows of the beanie, providing a firm and snug fit.
- **Double crochet (dc):** Creates taller stitches, adding height and texture to the beanie.

Crocheting Top-Down Beanies

The Crown

Using a chain stitch foundation, start crocheting in the round to create the crown of the beanie. Increase the stitches gradually in each round to form a conical shape.

The Brim

Once the crown reaches the desired height, begin crocheting the brim. Continue crocheting in the round without increasing the stitches, creating a flat and wide edge.

Customization and Design

- **Ribbing:** Alternate between sc and dc stitches to create a ribbed effect.
- **Pom-poms:** Add a playful touch by attaching colorful pom-poms to the beanie.

- **Stripes:** Use different yarn colors to create a striped pattern for a vibrant look.
- **Embellishments:** Adorn your beanie with beads, sequins, or other embellishments to enhance its style.

Types of Top-Down Beanies

Classic Beanie

A timeless staple, the classic beanie features a ribbed brim and a simple crown, providing warmth and comfort.



Slouchy Beanie

Featuring a relaxed and slouchy fit, this beanie is perfect for casual wear. It's wider at the brim and gradually tapers towards the crown.



Brimless Beanie

For a more minimalist look, try a brimless beanie. This versatile style is perfect for layering under hats or hoods.



Congratulations on embarking on your crochet journey! With the knowledge gained from this guide, you're now equipped to create unique and stylish top-down beanies that perfectly complement your wardrobe.

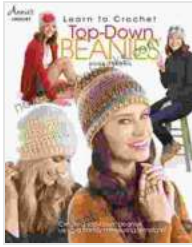
Remember to practice regularly, experiment with different techniques, and let your creativity shine through each stitch.

Happy crocheting!

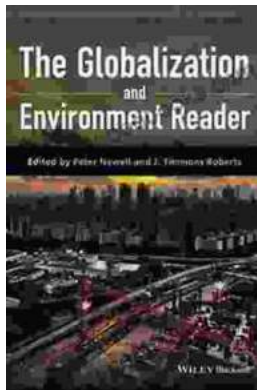
Learn to Crochet Top-Down Beanies by Rohn Strong

★★★★☆ 4.5 out of 5

Language : English



File size : 12180 KB
Text-to-Speech : Enabled
Screen Reader : Supported
Enhanced typesetting : Enabled
Print length : 26 pages
Lending : Enabled



Unlocking the Intricate Nexus: The Globalization and the Environment Reader

In an era marked by rapid globalization, the intricate relationship between human activities and the environment has become increasingly apparent. The...



Last Summer at the Golden Hotel: A Captivating Journey of Mystery, Romance, and Redemption

Synopsis: A Transformative Summer at the Golden Hotel Step into the heart of Last Summer at the Golden Hotel, a captivating novel that unveils the transformative...